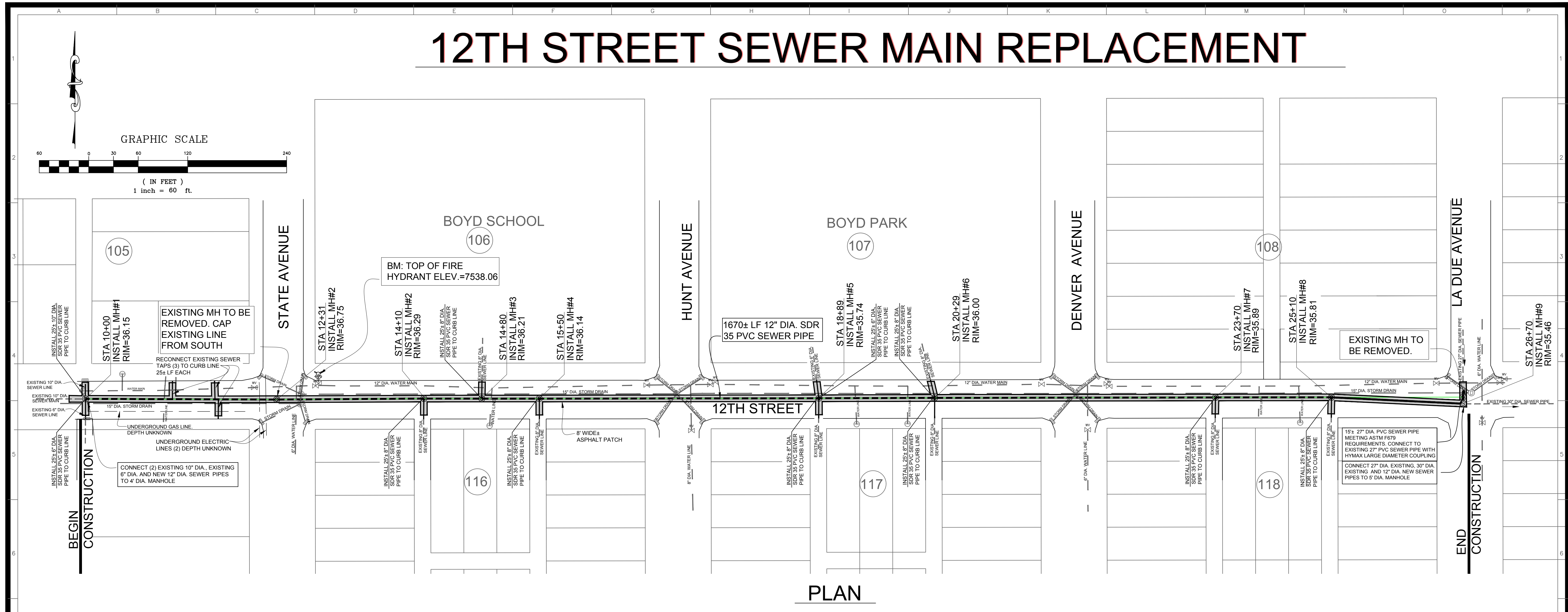
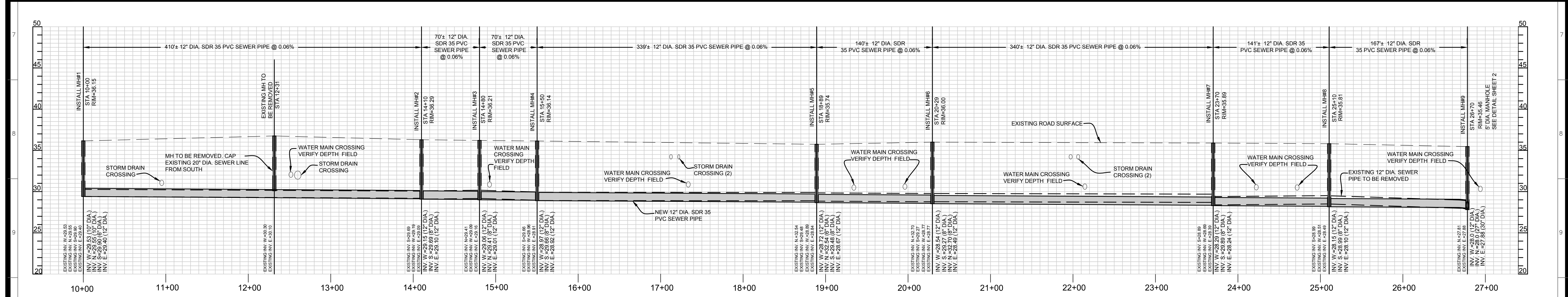


12TH STREET SEWER MAIN REPLACEMENT



PLAN



PROFILE

- NOTES**
- CONTRACTOR TO INSTALL MIN 8" RING AND COVER ON ALL NEW MANHOLES TO ALLOW FOR FUTURE STREET CONSTRUCTION.
 - ALL MATERIALS AND CONSTRUCTION SHALL CONFORM TO THESE PLANS, DETAILS, AND TECHNICAL SPECIFICATIONS ISSUED FOR THIS PROJECT, AND THE CITY OF ALAMOSA'S MOST RECENT CONSTRUCTION STANDARDS.
 - ALL CONSTRUCTION WILL BE INSPECTED AND APPROVED BY THE CITY OF ALAMOSA PUBLIC WORKS DEPARTMENT PRIOR TO ACCEPTANCE OF THE IMPROVEMENTS AND FINAL PAYMENT.
 - THE CONTRACTOR IS RESPONSIBLE FOR ALL COORDINATION WITH UTILITY COMPANIES, THE CITY OF ALAMOSA PUBLIC WORKS DEPARTMENT, AND ANY OTHER PUBLIC OR PRIVATE AGENCY AS REQUIRED TO COMPLETE THE INFRASTRUCTURE IMPROVEMENTS.
 - ANY DESIGN MODIFICATIONS SHALL NOT BE CONSTRUCTED UNTIL THE PLANS ARE MODIFIED, AND APPROVED BY THE CITY OF ALAMOSA PUBLIC WORKS DEPARTMENT.
 - THE CONTRACTOR IS RESPONSIBLE FOR OBTAINING ALL REQUIRED PERMITS PRIOR TO BEGINNING ANY CONSTRUCTION ACTIVITY.
 - THE CONTRACTOR SHALL CONFORM TO THE CURRENT OSHA REGULATIONS FOR EXCAVATIONS AND CONFINED SPACE ENTRY, IF APPLICABLE.
 - THE CONTRACTOR TO VERIFY IN FIELD, THE DEPTH AND SIZE OF ALL SEWER LINES TO BE RECONNECTED PRIOR TO ORDERING MANHOLES AND MATERIALS.
 - ALL EXISTING UTILITIES THAT WERE MARKED HAVE BEEN SHOWN. EXCEL ENERGY WOULD NOT MARK THE GAS AND ELECTRIC LINES FOR DESIGN PURPOSES. THE CONTRACTOR SHALL REQUEST MARKING OF EXCEL ENERGY LINES PRIOR TO CONSTRUCTION AND SHALL COORDINATE WITH THE CITY OF ADDRESS ANY CONFLICTS THAT WERE UNKNOWN DURING THE DESIGN AND PLAN DEVELOPMENT.
 - PRIOR TO CONSTRUCTION, THE CONTRACTOR SHALL FIELD VERIFY THE HORIZONTAL AND VERTICAL LOCATION (POTHOLE), SIZE, AND MATERIAL OF EXISTING UTILITIES AT TIE IN POINTS, AND PROPOSED UTILITY CROSSINGS. CONTACT THE CITY INSPECTORS AND THE ENGINEER IF ANY DISCREPANCY EXISTS.
 - THE CONTRACTOR SHALL CONTACT THE APPROPRIATE UTILITY AGENCIES AT LEAST 48 HOURS PRIOR TO ANY EXCAVATION OR GRADING TO OBTAIN UTILITY LOCATIONS. THE LOCATION OF EXISTING UTILITIES SHOWN ON THE PLANS ARE APPROXIMATE ONLY AND NOT ALL UTILITIES MAY BE SHOWN. THE CONTRACTOR SHALL DETERMINE THE EXACT LOCATION OF ALL EXISTING UTILITIES BEFORE COMMENCING WORK. THE CONTRACTOR SHALL BE FULLY RESPONSIBLE FOR ANY AND ALL DAMAGES AND COSTS WHICH MIGHT BE OCCASIONED BY HIS FAILURE TO EXACTLY LOCATE AND PROTECT ANY AND ALL UTILITIES.
 - CONTRACTOR HAS THE OPTION TO USE CRUSHED GLASS PROVIDED BY THE CITY OF ALAMOSA AS PIPE BEDDING MATERIAL. THE CRUSHED GLASS IS AVAILABLE AT NO MATERIAL COST TO THE CONTRACTOR AND IS LOCATED AT THE CITY SANITATION YARD ON 20TH STREET. CONTRACTOR TO COORDINATE WITH THE CITY OF ALAMOSA FOR INSTALLATION AND HAUL.
 - CONTRACTOR SHALL INSTALL NEW PIPE ON ALL LATERALS FROM THE SEWER MAIN TO THE CURB LINE.

NOT FOR CONSTRUCTION. FOR BIDDING PURPOSES ONLY. 5/15/2018

REVISIONS	By	Date

REYNOLDS ENGINEERING COMPANY
 21626 COUNTY ROAD AA.5
 ALAMOSA, COLORADO 81101
 (719) 274-3218

DATE: MAY, 2018
 SCALE: 1"=60'
 DRAWN: KR
 CHECKED: MR
 APPROVED:

CLIENT:	CITY OF ALAMOSA
TITLE:	12TH STREET SEWER MAIN REPLACEMENT
JOB NO.	ALAMOSA 12TH STREET SEWER
DRAWING	ALAMOSA 12TH STREET SEWER
SHEET	1 OF 2

This Drawing is the property of the Engineer and is not to be reproduced, modified or used for any other project or extension of this project except by express written consent of the Engineer. The Engineer shall not be liable for any claims, liability or costs arising out of any reuse or modification of this drawing by others.