

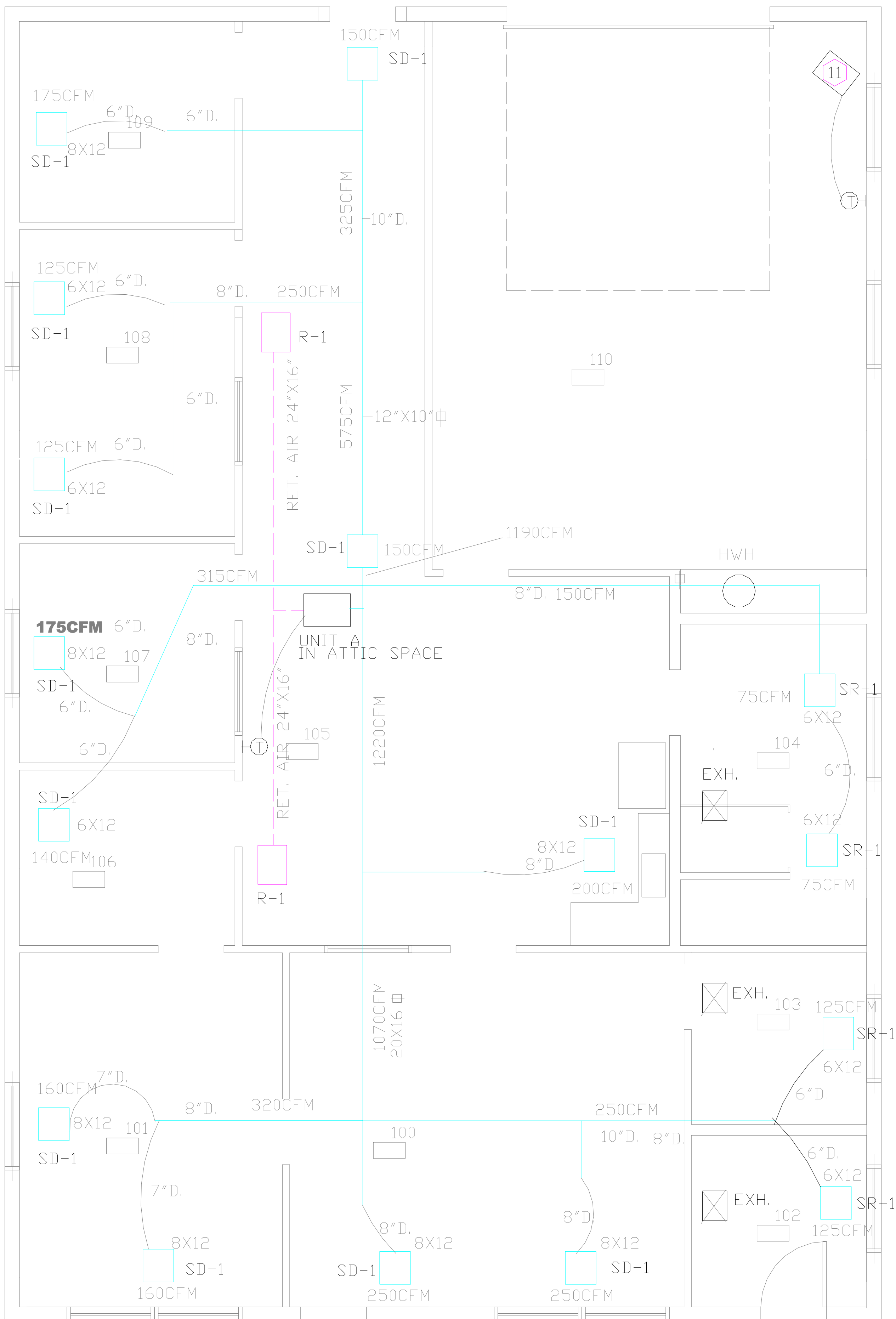
REGISTER/DIFFUSER/GRILL SCHEDULE

CODE	MGRF. & MODEL #	DESCRIPTION	CFM	SIZE	MAX. S.P.	MAX NC	DAMPER	FINISH	REMARKS
SR-1	TITUS 301FS	SUPPLY REGISTER	AS INDICATED	SEE PLANS	.05	15	O.B.D.	OFF WHITE ENAMEL	LOUVERED FACE SINGLE DEFLECTION-MOUNT IN GYPBD.
SD-1	TITUS TMS	SUPPLY DIFFUSER	AS INDICATED	24"X24"	.05	15	NONE	OFF WHITE ENAMEL	LOUVERED FULL FACE LAY-IN
R-1	TITUS PAR	RETURN GRILLE	AS INDICATED	24"X24"	.03	15	NONE	OFF WHITE ENAMEL	PERFORATED FACE LAY-IN

UNIT A	AMERICAN STANDARD A UH1D120A961A NAT. GAS 2400CFM .25 SP 3"D. FLUE 110,000 INPUT HEATING BTU, 1/2"GAS, 115/1/60,FULL LOAD AMPS .71, WGT. =193LBS.
EXHAUST FAN	GREEHECK SP-125, 243 CFM @ .125 SP, 3.0 SONES, 76W, 5" DIAM. DUCT. TIE TO LIGHT SWITCH.

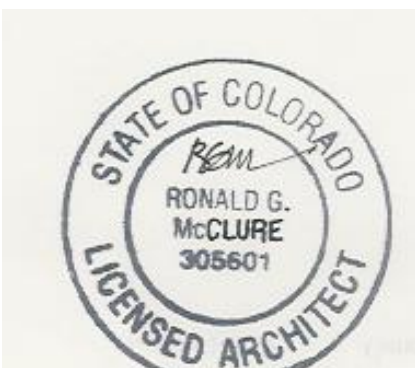
NOTES:

1. ALL WORK TO BE DONE IN ACCORDANCE WITH THE 2006 IMC (INTERNATIONAL MECHANICAL CODE)AND ANY OTHER APPLICABLE LOCAL AND STATE CODES.
 2. CFMs AND BTUs REFLECTED ON PLANS ARE FOR HEATING.
 3. DUCT LAYOUTS ARE SCHEMATIC ONLY. FINAL LAYOUT, POSITIONING AND DETAILING IN ACCORDANCE WITH THE BUILDING'S STRUCTURE. SIZES SHOWN ARE PRESCRIPTIVE ONLY.
 4. USE INSULATED METAL DUCTS AS DIAGRAMMED FOR TRUNK AND SUPPLY DUCTS, INSULATED FLEX DUCTS NO LONGER THAN 5 FEET CAN BE USED FOR FINAL TERMINATION TO SUPPLY GRILLES.
 5. ALL METAL DUCTS TO BE LINED WITH MINIMUM 1" FIBERGLASS INSULATION R=5.
 6. FLEX DUCTS SHALL BE EQUAL TO GENFLEX SLR-181 WITH A FLAME SPREAD RATING OF 25 OR LESS.
 7. CONTRACTOR TO PLACE ALL SYSTEMS IN OPERATION AND TO TEST, ADJUST AND BALANCE SYSTEM TO PROVIDE OUTPUT TO WITHIN 10% OF DESIGN RATINGS.
 8. ALL MANUALS, LOGS AND OPERATING INSTRUCTIONS FOR HEATING/AC UNITS TO BE LEFT WITH THE OWNER.
 9. NOT USED.
 10. UNDERCUT ALL INTERIOR DOORS 1" FOR RETURN AIR FLOW.
11. SUSPENDE DAYTON HEATER 2RYU7,NAT. GAS. 30000 BTH,370 CFM,3.0 FULL LOAD AMPS,4"D. FLUE 12-3/8X30'X25-7/8" 24V. THERMOSTAT.

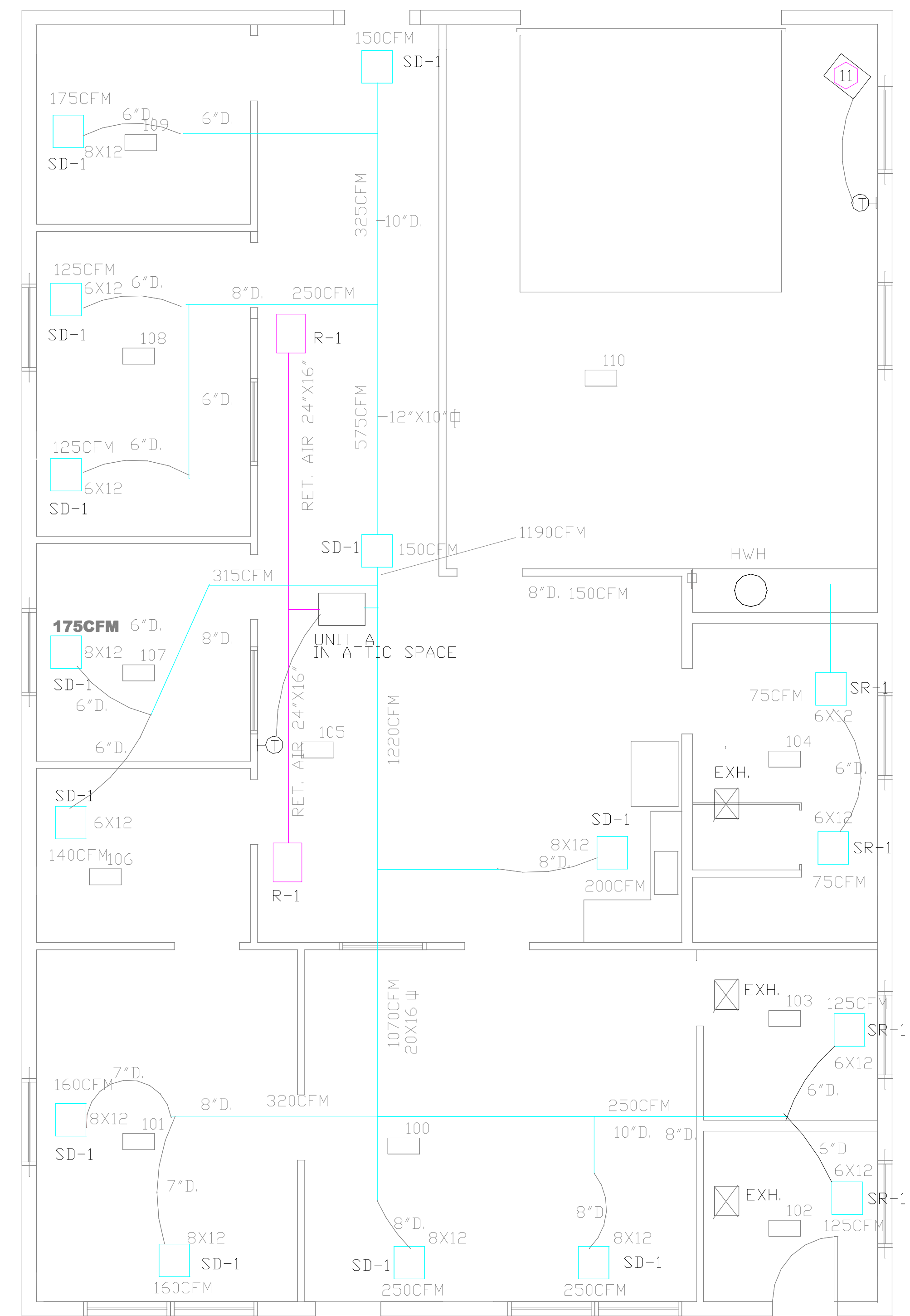


HV PLAN

SCALE: 1/4"=1'-0'



DATE: 2/16/2017



REGISTER/DIFFUSER/GRILL SCHEDULE

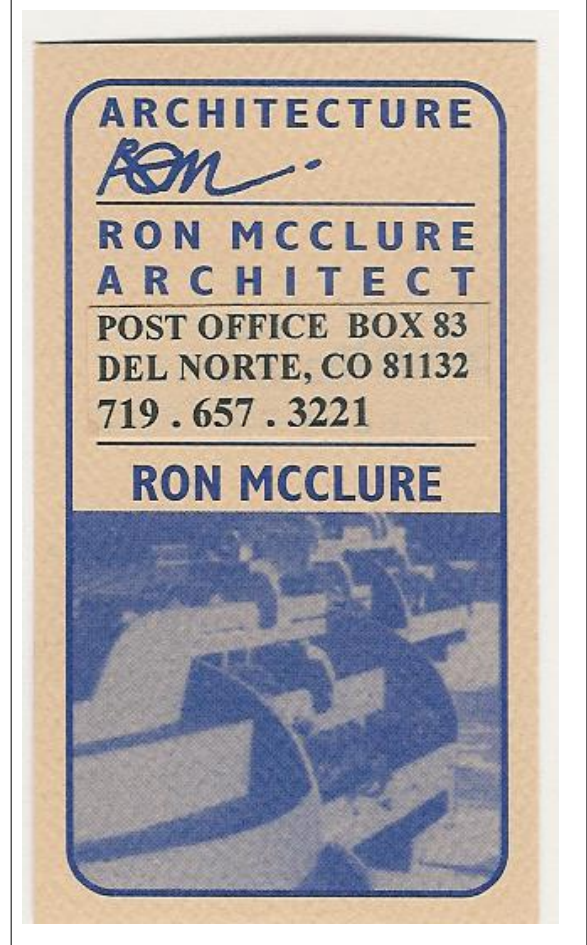
CODE	MGRF. & MODEL #	DESCRIPTION	CFM	SIZE	MAX. S.P.	MAX NC	DAMPER	FINISH	REMARKS
SR-1	TITUS 301FS	SUPPLY REGISTER	AS INDICATED	SEE PLANS	.05	15	O.B.D.	OFF WHITE ENAMEL	LOUVERED FACE SINGLE DEFLECTION-MOUNT IN GYPBD.
SD-1	TITUS TMS	SUPPLY DIFFUSER	AS INDICATED	24"X24"	.05	15	NONE	OFF WHITE ENAMEL	LOUVERED FULL FACE LAY-IN
R-1	TITUS PAR	RETURN GRILLE	AS INDICATED	24"X24"	.03	15	NONE	OFF WHITE ENAMEL	PERFORATED FACE LAY-IN

UNIT A	AMERICAN STANDARD A UH1D120A961A NAT. GAS 2400CFM .25 SP 3"D. FLUE 110,000 INPUT HEATING BTU, 1/2"GAS, 115/1/60, FULL LOAD AMPS .71, WGT. =193LBS.
EXHAUST FAN	GREEHECK SP-125, 243 CFM @ .125 SP, 3.0 SONES, 76W. 5" DIAM. DUCT. TIE TO LIGHT SWITCH.

- NOTES:**
- ALL WORK TO BE DONE IN ACCORDANCE WITH THE 2006 IMC (INTERNATIONAL MECHANICAL CODE) AND ANY OTHER APPLICABLE LOCAL AND STATE CODES.
 - CFMs AND BTUs REFLECTED ON PLANS ARE FOR HEATING.
 - DUCT LAYOUTS ARE SCHEMATIC ONLY. FINAL LAYOUT, POSITIONING AND DETAILING TO BE DETERMINED WITH THE YOUT, POSITIONING AND DETAILING TO BE DETERMINED WITH THE BUILDING'S STRUCTURE. SIZES SHOWN ARE PRESCRIPTIVE ONLY.
 - USE INSULATED METAL DUCTS AS DIAGRAMMED FOR TRUNK AND SUPPLY DUCTS. INSULATED FLEX DUCTS NO LONGER THAN 30 FEET.
 - INSULATED METAL DUCTS AS DIAGRAMMED FOR TRUNK AND SUPPLY DUCTS. INSULATED FLEX DUCTS NO LONGER THAN 30 FEET.
 - ALL FLEX DUCTS TO BE MINIMUM 1" SUPPLY FIBERGLASS INSULATION R-5.
 - FLEX DUCTS SHALL BE EQUAL TO GENFLEX SLR-181 WITH A DAVE HEAD RATING OF 25 OR LESS.
 - CONTRACTOR TO PLACE ALL SYSTEMS IN OPERATION AND TO ADJUST AND BALANCE SYSTEMS TO PROVIDE OUTPUT TO WITHIN 10% OF DESIGN RATINGS.
 - ALL MANUALS, LOSS AND OPERATING INSTRUCTIONS FOR HEATING/AC UNITS TO BE LEFT WITH THE OWNER.
 - SUSPENDED DAYTON HEATER 2RYU7, NAT. GAS. 30000 BTH, 370 CFM, 3.0 FULL LOAD AMPS, 4"D. FLUE UNDER 8X8" X 12" OR 8X8" THERMOSTAT.
 - RETURN AIR FLOW.

- SUSPENDED DAYTON HEATER 2RYU7, NAT. GAS. 30000 BTH, 370 CFM, 3.0 FULL LOAD AMPS, 4"D. FLUE 12-3/8" X 30" X 25-7/8" 24V. THERMOSTAT.

PARKS BLDG. PLAN 2



DATE: 4/15/2016
DATE: 2/16/2017

HV PLAN

HV PLAN

SCALE: 1/4" = 1'-0"

M1