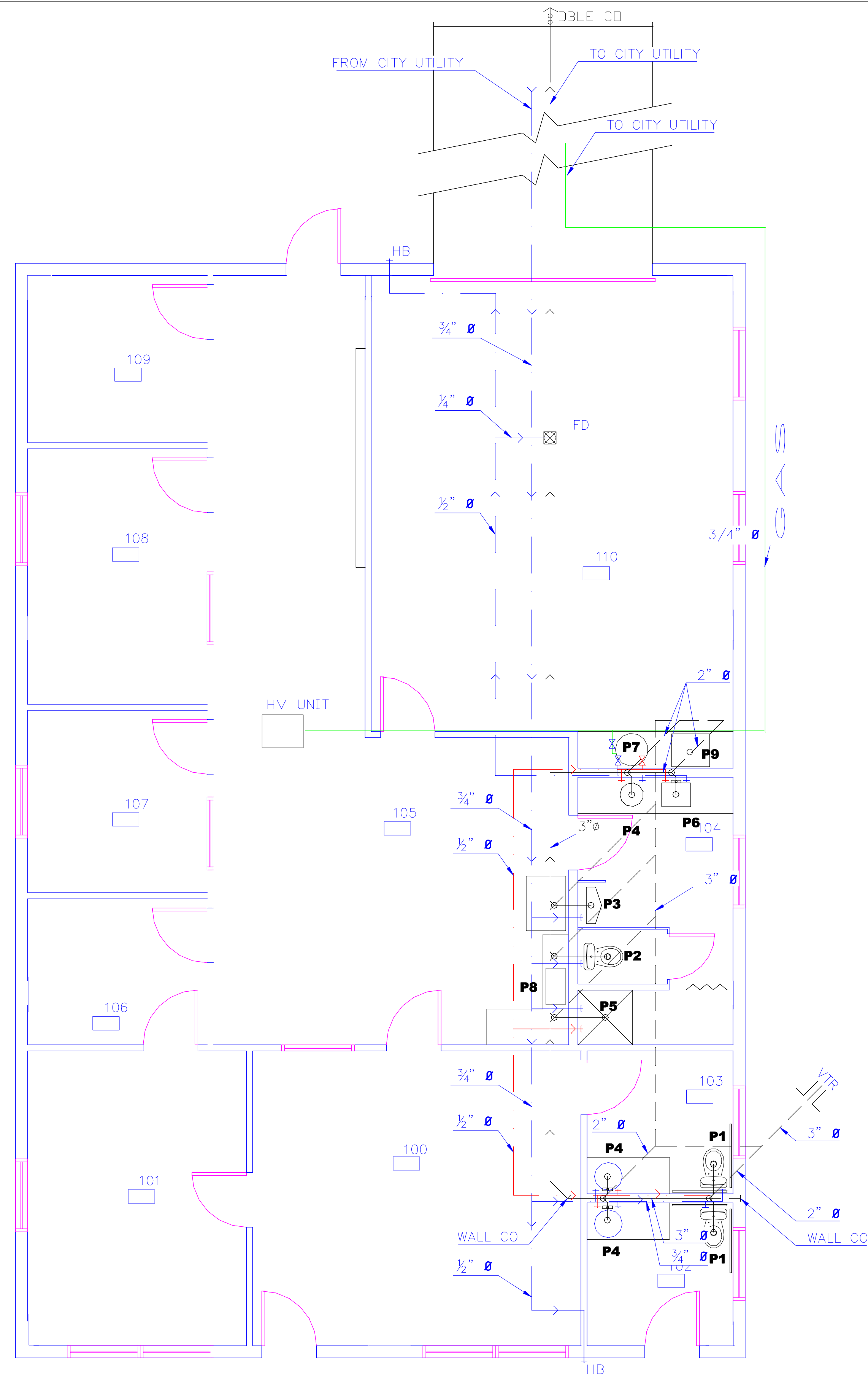


PLUMBING PLAN

SCALE: 1/4"=1'-0"



DATE: 2/16/2017



PLUMBING PLAN

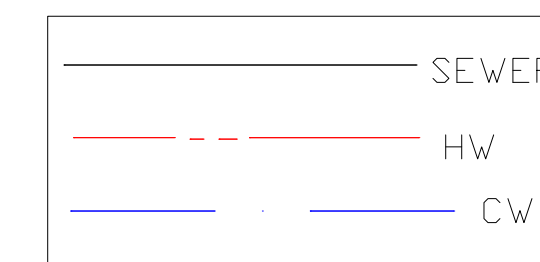
SCALE: 1/4"=1'-0"

FIXTURE	DESCRIPTION
P1	HANDICAPPED WC: PROFLOW PF1403TWH, 1.6 GAL. ADA UNIVERSAL WHITE SEAT: PROFLOW EB OPEN FRONT WHITE
P2	WC: PROFLOW PF1401TWH 1.6 GAL. ELONGATED BOWL WHITE SEAT: PROFLOW EB OPEN FRONT WHITE
P3	URINAL: PROFLOW PF1815WH CCN TSPEED JET VALVE: SLOAN, 53082653 1.5 GAL./FLUSH VALVE W/ SEAT 186XL
P4	SINK: PROFLOW PF20174WH, 20X17 SELF RIMMING VC LAVATORY . FAUCET: PROFLOW PFW5436CP 2 HANDLE. POLISHED CHROME. GOOSENECK ADA
P5	SHOWER STALL AQUATIC A1363CWH 36" FRP WHITE 4 PC.. HEAD: MOEN M62380 SHOWER VALVE: MOEN: MTL182 POLISHED CHROME
P6	SINK: PROFLOW PFSR172273 17X22 3 HOLE 20GA. STAINLESS STEEL. FAUCET: PROFLOW PFW5436CP 2 HANDLE. POLISHED CHROME. GOOSENECK ADA
P7	HWH: BRADFORD WHITE NAT. GAS 40GAL SUPPLY HOUSE SKU: RG240T6N, ENERGY SAVER
P8	SINK: PROFLOW PFSR332274 33X22 4 HOLE 20GA. STAINLESS STEEL. FAUCET: PROFLOW PFW5436CP 2 HANDLE. POLISHED CHROME. GOOSENECK ADA
P9	MOP SINK: FLORESTONE MSR 2424 FAUCET: PROFLOW PF1118 UTILITY FAUCET W/ WALL BASE/ HOSE BRACKET TPF245 3 BRACKET HANGER.
FD	FLOOR DRAIN: PROFLOW PF42890 3-1/2" ADJ DRAIN W/ 6" GRATE AND RING.

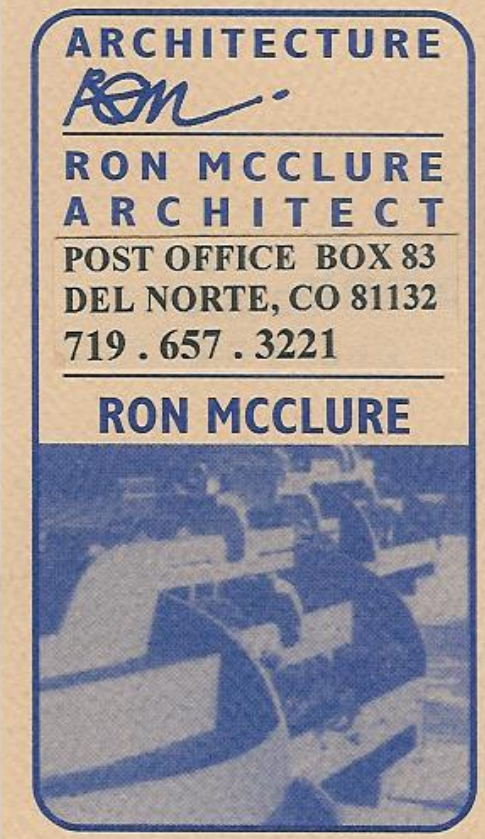
PLUMBING NOTES

- ① ALL WORK TO BE DONE IN ACCORDANCE WITH THE 2006 IPC (INTERNATIONAL PLUMBING CODE) AND ANY OF THE APPLICABLE LOCAL AND STATE CODES.
- ② ALL WATER LINES TO BE INSULATED W/ 1" FOAM INSULATION.
- ③ SLEEVE ALL LINES THRU STEM WALLS.

PLUMBING LEGEND



PARKS BLDG PLAN 2



DATE: 4/15/2016
DATE: 2/16/2017

PLUMBING PLAN

P1