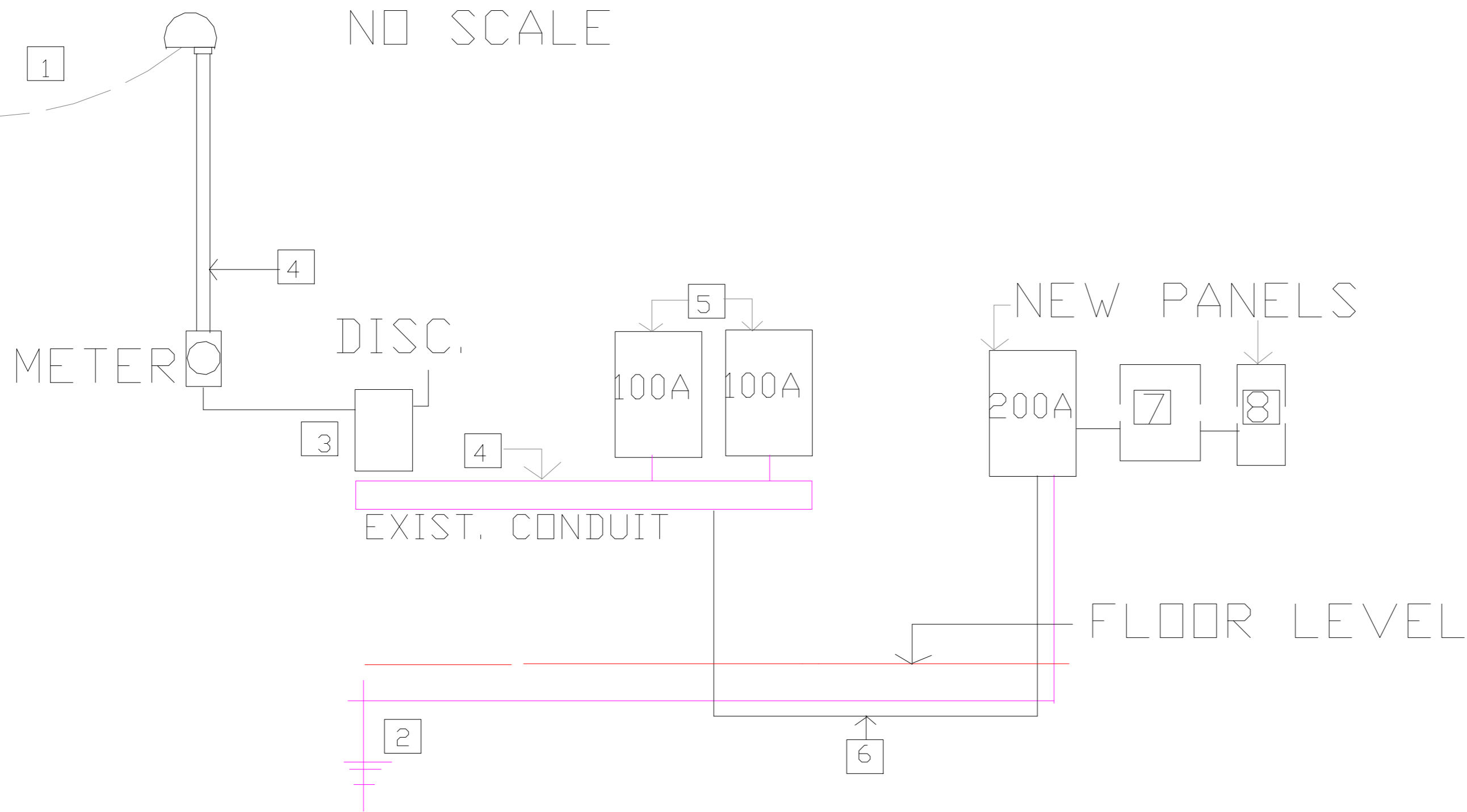


**ELECTRICAL RISER DIAGRAM**

NO SCALE



**NOTES**

- [1] OVERHEAD 3 PH. ELECTRICAL SERVICE BY SERVING UTILITY.
- [2] GROUNDING AS PER NEC ARTICLE 250.
- [3] EXISTING DISCONNECT 400A.
- [4] EXISTING SERVICE IN 3 1/2" C.
- [5] EXISTING PANELS
- [6] 4#2/0 KCMIL CU AND 1#4 CU GROUND IN A 2 1/2". C.
- [7] 3PH. 277V. TRANSFORMER
- [8] LIGHTING PANEL LP

**PANEL SCHEDULE EP** 200A, 3 PHASE 42 CIRCUIT

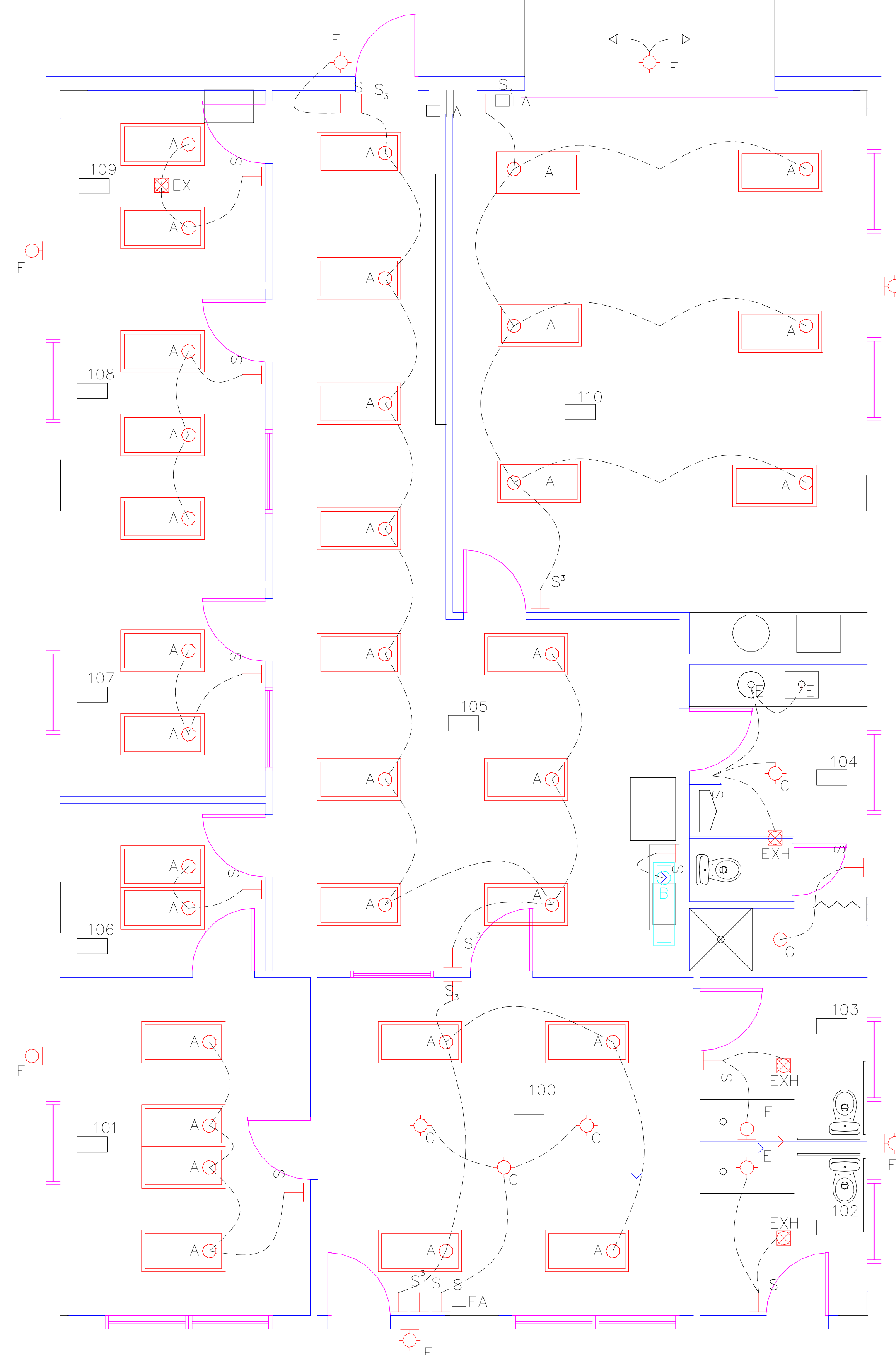
AREA/RM. NO.	OCPD	BC#	PHASE	BC#	OCPD	AREA/RM. NO.
RM. 115 4 RECEPT.	20	A1	A	A2	20	RM. 116 4 RECEPT.
RM. 117 4 RECEPT.	20	A3	B	A4	20	RM. 118 4 RECEPT.
RM. 119 4 RECEPT.	20	A5	C	A6	20	RM. 120 4 RECEPT.
RM. 126 2 RECEPT.	20	A7	A	A8	20	RM. 123 5 RECEPT.
EXT. HVAC UNIT	30	A9	B			
RM. 123 2-HVAC	100	REPLACES EXIST. HT. UNITS				
		ON EXIST. PANELS				
LIGHTING PANEL	100		C			

**TOTAL CONNECTED LOAD** PANEL EP

NEW ADDITION RECEPTACLES=50A  
 NEW ADDITION HVAC UNIT= 23A  
 NEW ADDITION LIGHTING =20A  
 EXISTING BLDG. LIGHTING =42A  
 TOTAL =135A



DATE: 2/16/2017



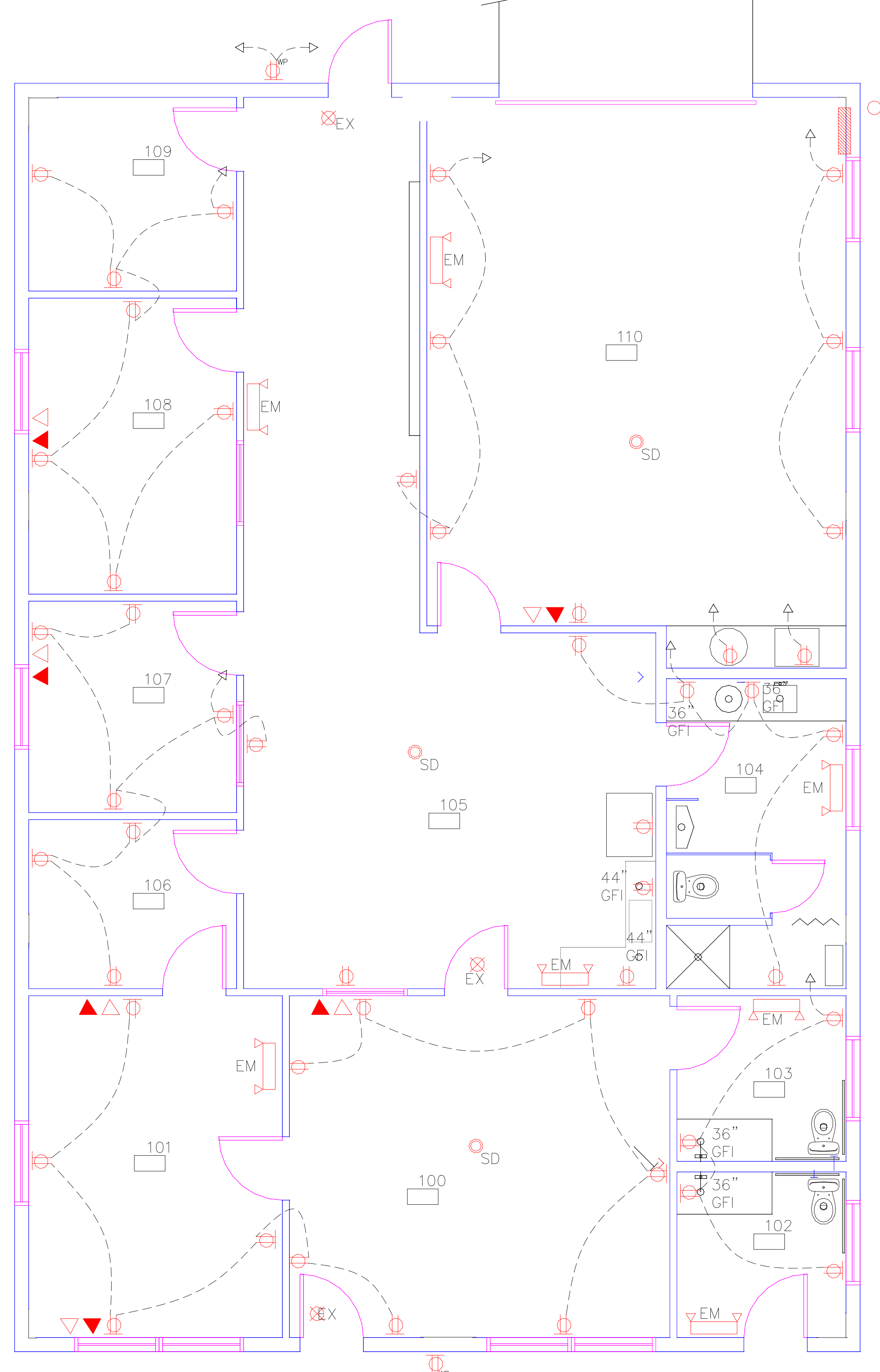
# LIGHTING PLAN

SCALE: 1/4"=1'-0"

- ELECTRICAL SYMBOLS**
- ⊙ Duplex receptacle, 20A
  - ⊙ Waterproof Duplex receptacle, 20A, w/ cover
  - ⊙ 220v
  - ⊙ Single pole switch
  - ⊙ 3 way switch (Occupancy Sensor)
  - ⊙ Telephone
  - ⊙ Communications
  - ⊙ Fluorescent Light
  - ⊙ Incandescent wall light
  - ⊙ Incandescent strip light
  - ⊙ SD Smoke Detector, 120v, wired w/ batt. backup

SYMBOL	DESCRIPTION
⊙	FLUORESCENT LIGHT SURFACE MTD. 2X4 LITHONIA 2N432 RW419 57-57W/8P LAMP, 327K, COLOR, WHITE
⊙	DELETED
⊙	RECESSED CAN, GOTHAM #412-2/30TR-84A 120V, COMPACT FLUORESCENT, CROSS Baffle, ELECTRONIC BALLAST, 120V, LAMP, 2-1/2" DIA., 6" APERTURE DOWNLIGHT
⊙	DELETED
⊙	RECESSED LIGHT, SHAPER #6A-INC, 1/80-120V-14W INCANDESCENT, NATURAL ALUMINUM FINISH, 120V
⊙	EXTERIOR WALL LIGHT, 1/4" COUPOUR 500 SF DIA 160 FEET DIA, 17" W x 10" H SF x 6" METAL, HAIRSE, NATURAL ALUMINUM FINISH
⊙	SHOWER LIGHT, HALO H071CT HOUSING 6P # W/ GLASS ALUMINUM LENS, 20W CFL LAMP
⊙	OCUPANCY SENSORS, WATTSSTOPPER #MS-200 INFRARED THERM UNLESS OTHERWISE NOTED
EX	EXIT LIGHT, LITHONIA, OMS36, 120V INCANDESCENT GREEN, 2X2 FT/24"
SD	SMOKE DETECTOR, MIDE, #1276E BATTERY BACKUP
EM	EMERGENCY LIGHT, LITHONIA ELM 11P x 5" 3P 120V WHITE
FA	TYPE ALUMINUM PERFORATING COMPACT, FULL STRIKER PIPERAL BELL FOR 4300-LAMP, 6.7" DIA.
PANEL	ELECTRICAL PANEL, 200A, RECESSED, SQUARE D 43 SPACE

- ELECTRICAL NOTES**
1. ALL WORK TO BE DONE IN ACCORDANCE WITH THE 2005 NEC NATIONAL ELECTRICAL CODE AND ANY OTHER APPLICABLE LOCAL AND STATE CODES.
  2. DO NOT SCALE DRAWING.
  3. SEE REFLECTED CEILING PLAN (A4) FOR EXACT LOCATION OF LIGHTS.
  4. DELETE LIGHTING SENSORS



# POWER PLAN

SCALE: 1/4"=1'-0"

PC UP ON ROOF 200A ELECT PANEL

## PARKS BLDG PLAN 2

ARCHITECTURE  
**RON MCLURE ARCHITECT**  
 POST OFFICE BOX 83  
 DEL NORTE, CO 81132  
 719 . 657 . 3221  
**RON MCLURE**

DATE: 4/15/2016  
 DATE: 2/16/2017

## ELECTRICAL PLAN

**E1**